



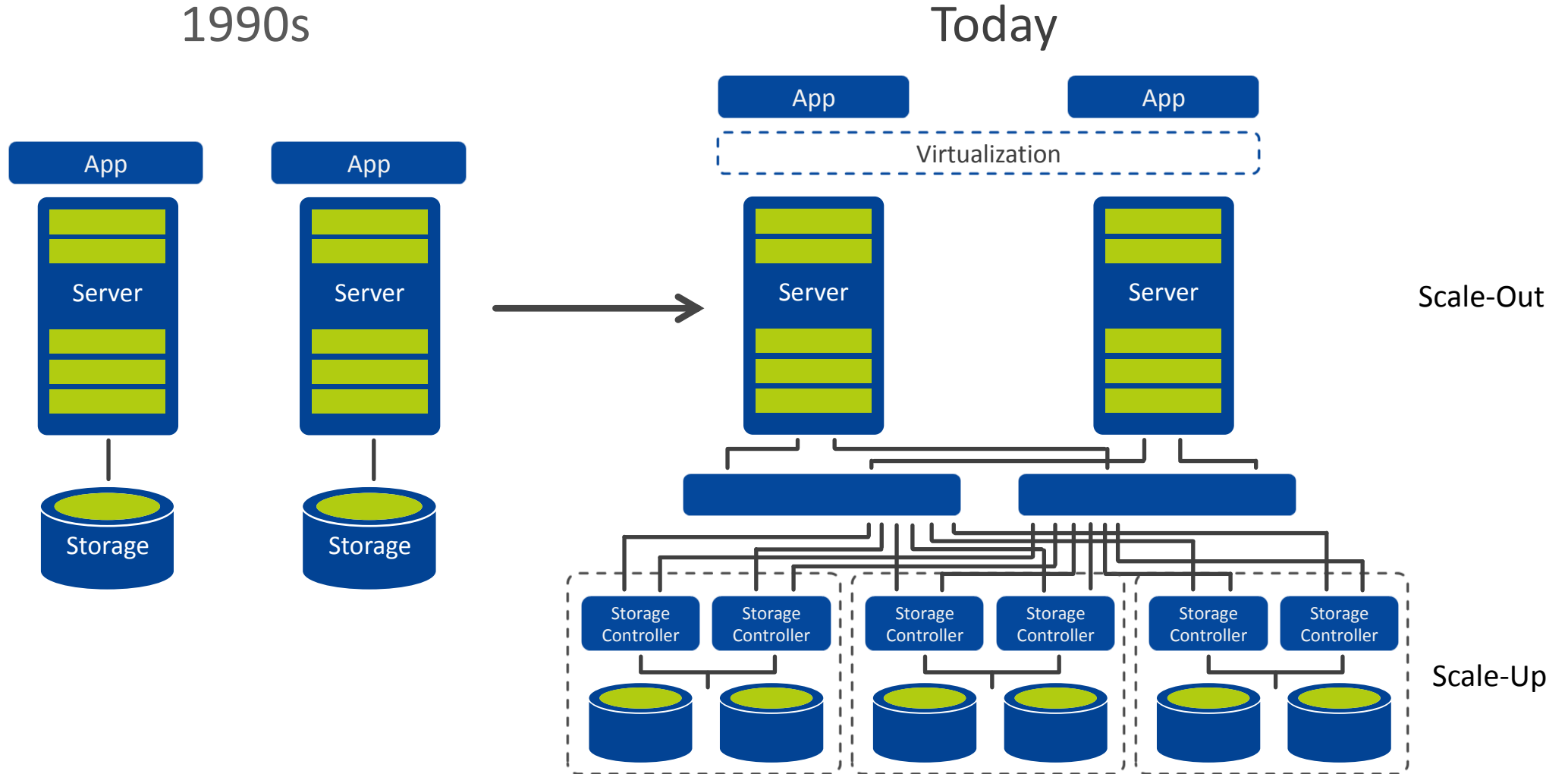
## > Making IT Infrastructure Invisible

Syed Mutahir Ali,  
Technology Consultant – Enterprise Solutions Division  
ArcPoint Technologies - Pakistan

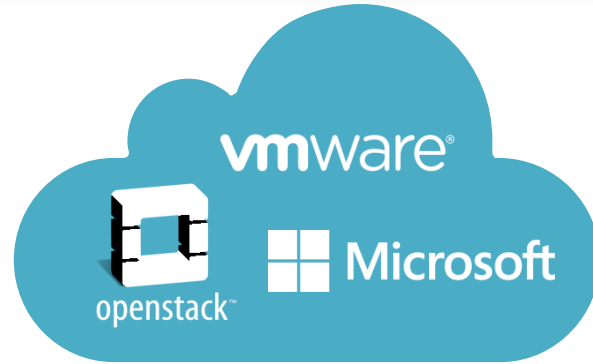


The Best IT Infrastructure Is  
Infrastructure You Can't See

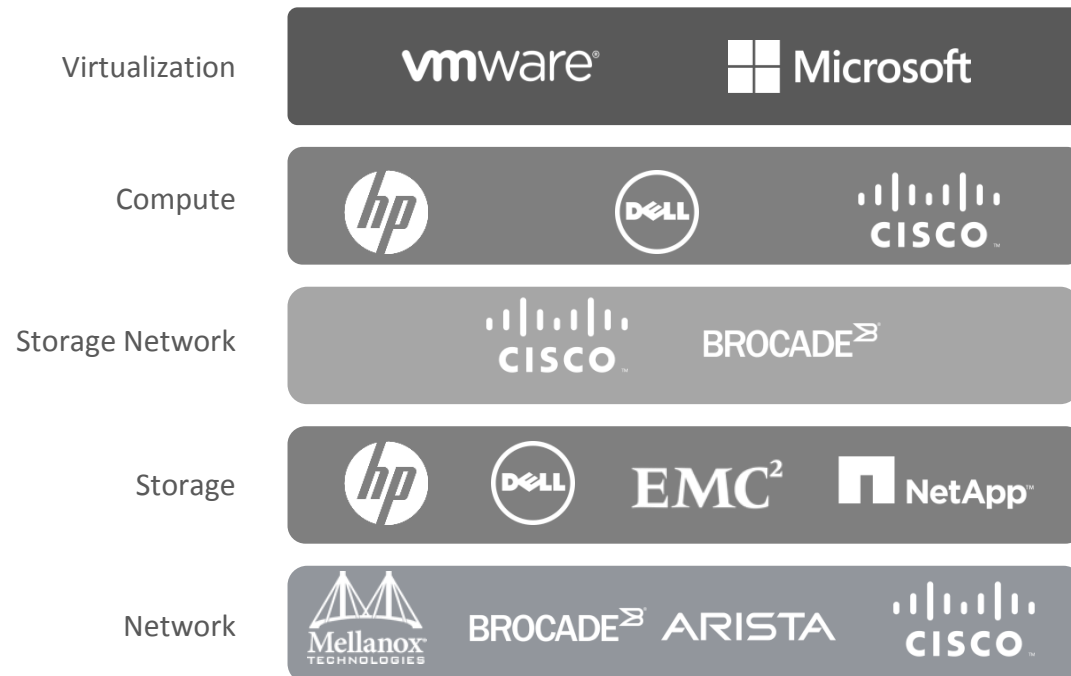
# > Evolution of Enterprise Infrastructure



# > Complexity with Legacy Infrastructure



- + Automated operations
- + Self-service provisioning
- + Monitoring and analytics

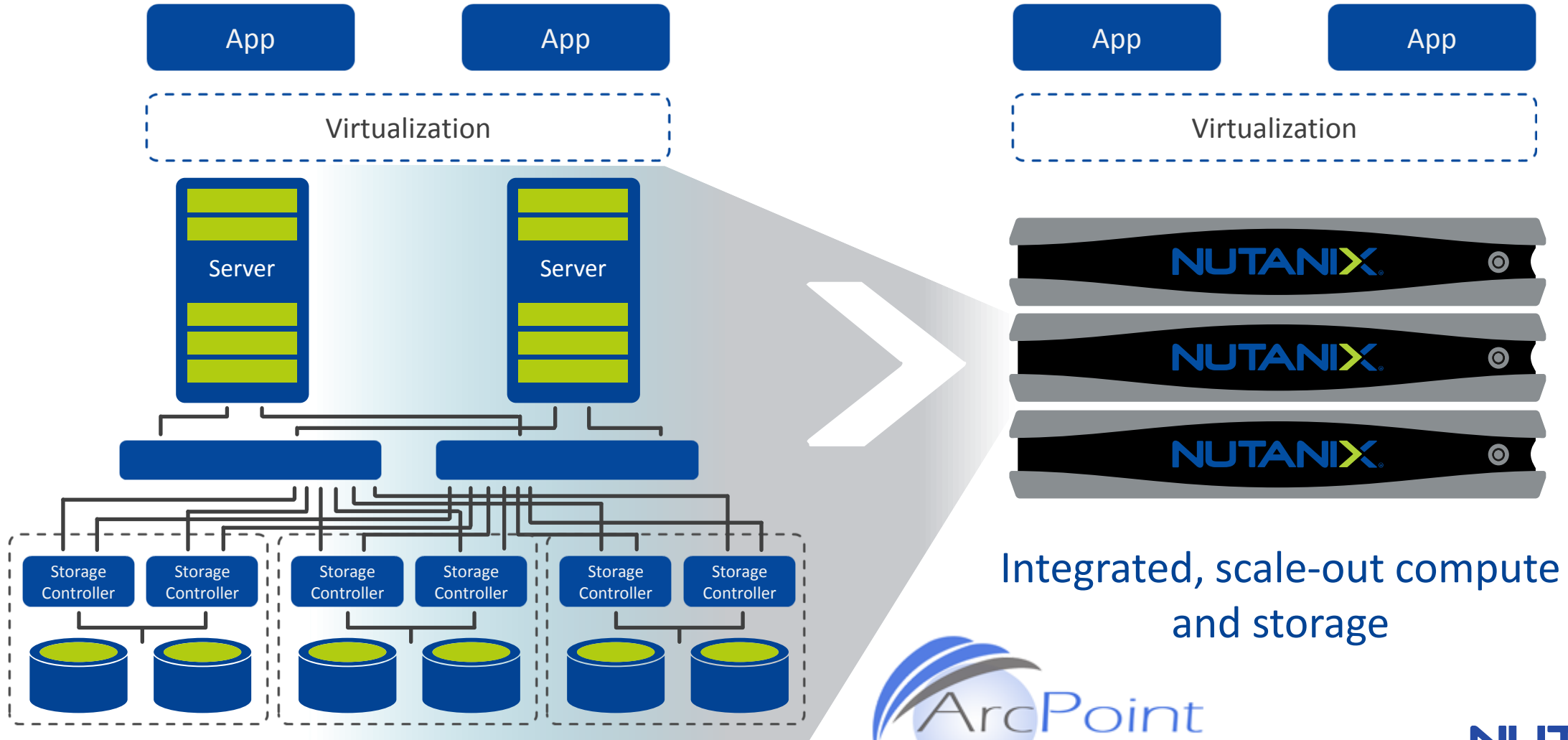


- x Lifecycle complexity
- x Resource silos
- x Support challenges
- x High costs

# > How Should Infrastructure Be Delivered?

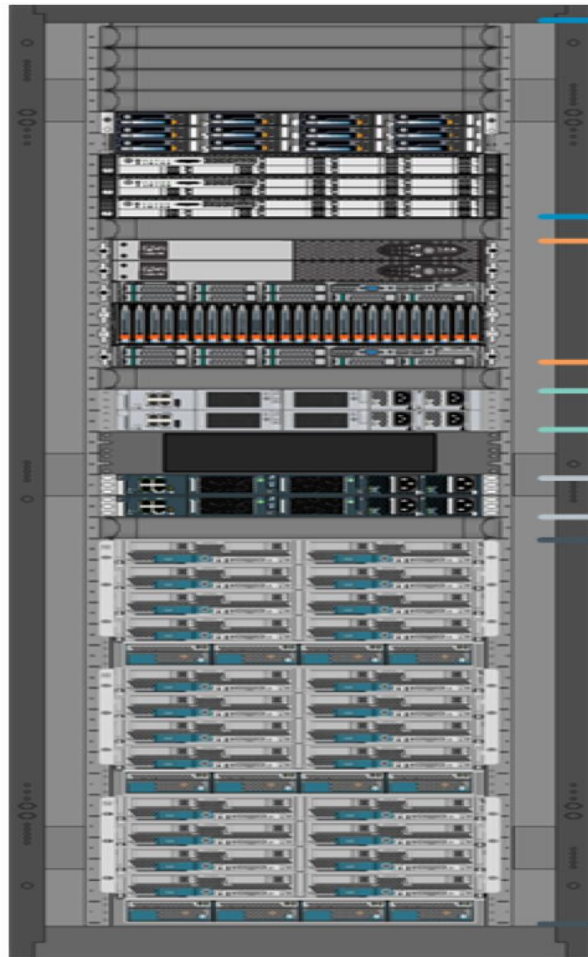


# > The Solution: Hyperconverged Infrastructure



# > Footprint Reduction

Legacy

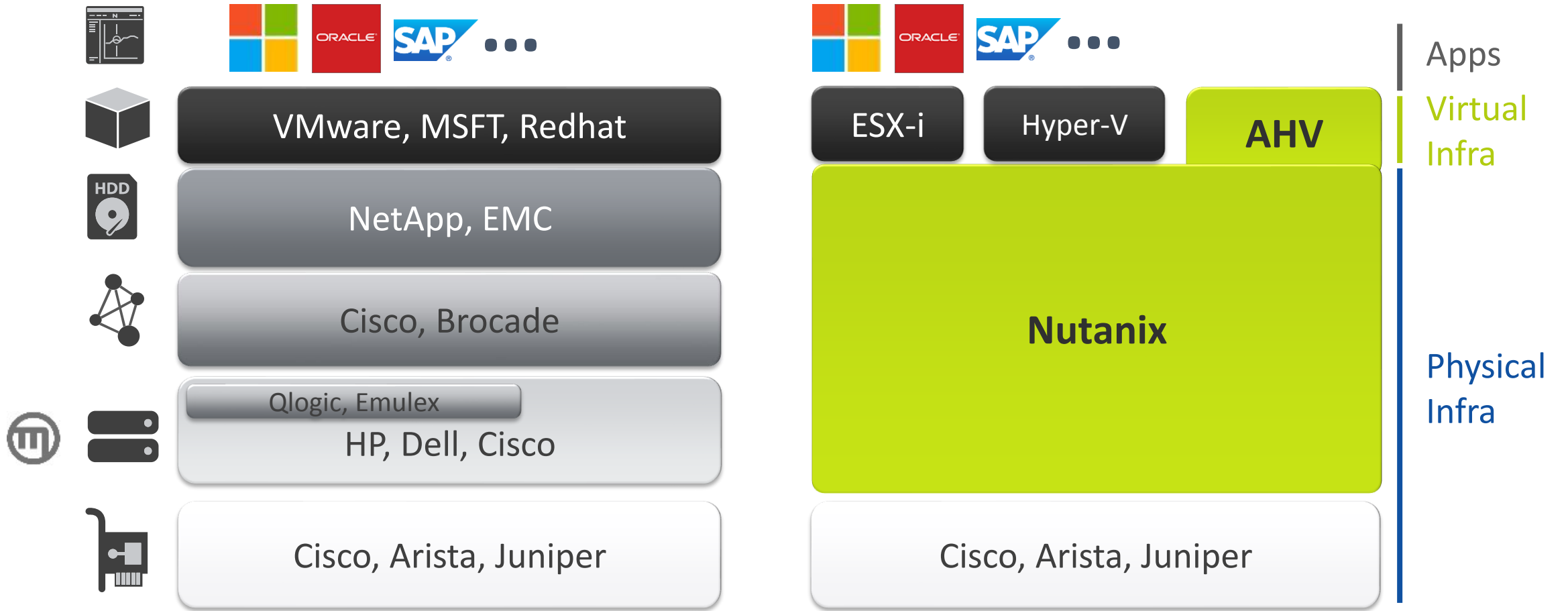


Up to **90%**  
Less Power and Space



**NUTANIX**<sup>™</sup>

# > Datacenter Stack



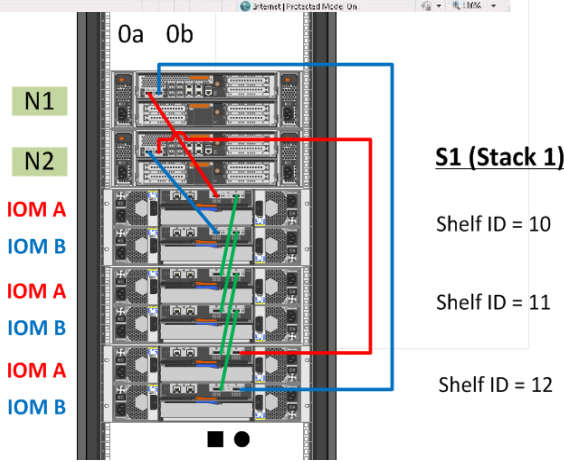


# > Integrated Datacenter Management



```

NK5-1# config t
Enter configuration commands, one per line. End with CNTL/Z.
NK5-1(config)# switchname NK5-1
NK5-1(config)# slot 2
NK5-1(config-slot)# po
pop port
NK5-1(config-slot)# port ?
<1-199> Enter a port range
NK5-1(config-slot)# port 1-16 type ?
 ethernet Ethernet Port
 fc FC Port
NK5-1(config-slot)# port 1-16 type ?
 ethernet Ethernet Port
 fc FC Port
NK5-1(config-slot)# port 1-16 type fc
NK5-1(config-slot)#
    
```



**Hypervisor Summary**  
 ESXi  
 5.0.0: 4  
 5.1.0: 1

**Cluster IOPS**  
 1,875 IOPS  
 6,000 IOPS (100pm - 300pm)

**Storage Summary**  
 18.69 TB  
 USED: 13.35 TB  
 TOTAL: 32.05 TB

**VM Summary**  
 146 VMS  
 105 ON, 1 OFF, 0 SUSPENDED, 40 UNKNOWN

**Cluster CPU Usage**  
 97.28% (OF 180.58 GHz)

**Cluster Memory Usage**  
 28.28% (OF 703.9 GB)

**Critical Alerts**  
 Network Disconnect (6 days ago)  
 Controller VM 10.156.99 is not reachable from Controller VM 10.156.76 in the last six attempts.

**Warning Alert**  
 Time Difference High (5 days ago)  
 Wall clock time has drifted by more than 60 seconds between the Controller VMs 10.156.75 and 10.156.99.

**Events**  
 Cluster Event (7 days ago)  
 Creation of nfs datastore 'ctrl' for container 'ctrl' successful for nodes [6]

# > Built for the Cloud Era



Infrastructure for  
Private Cloud

- Data Backup
- Disaster Recovery
- Seamless App Mobility



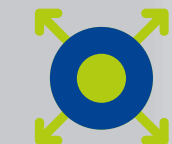
Agile



Simple



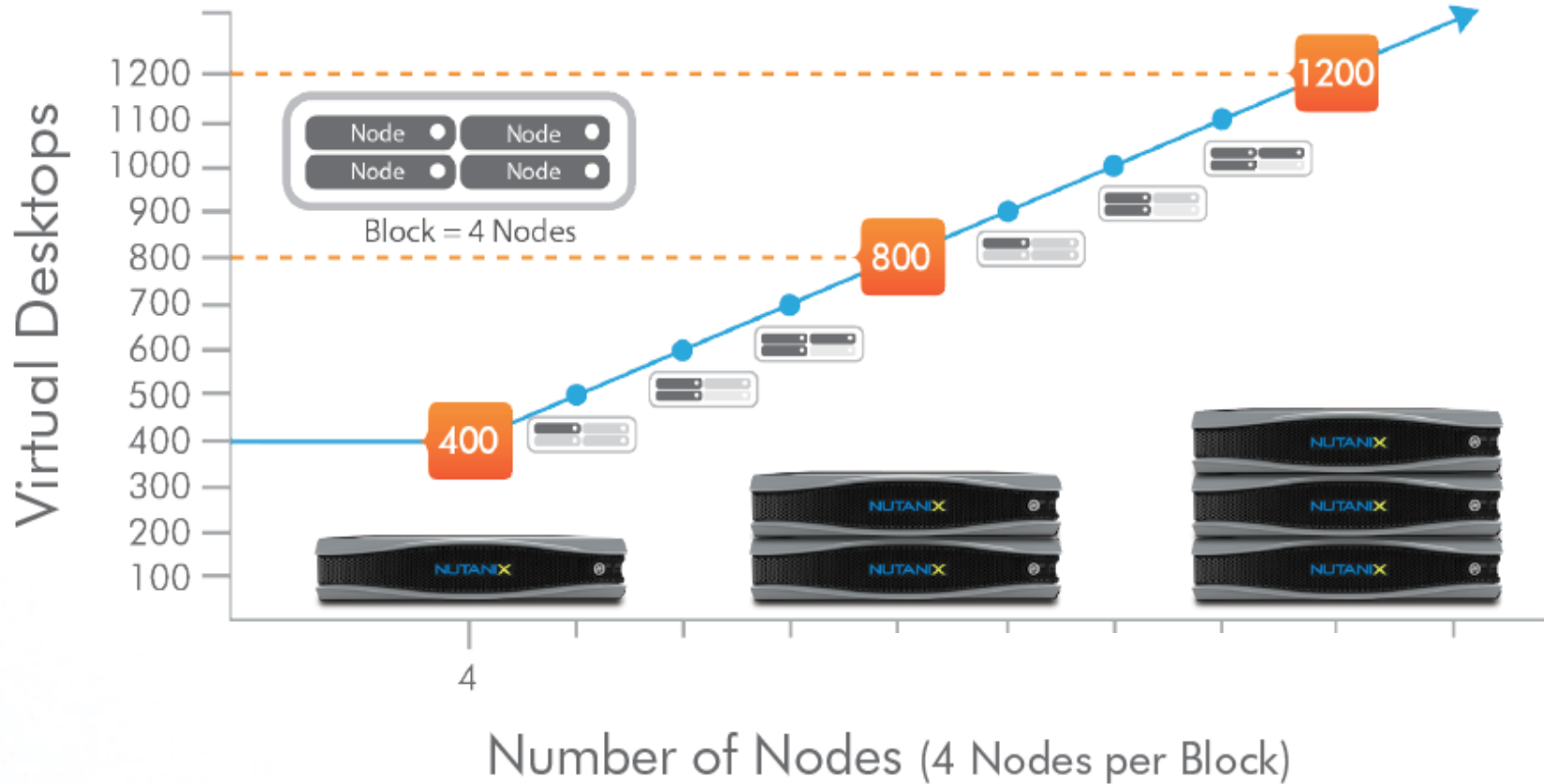
Secure



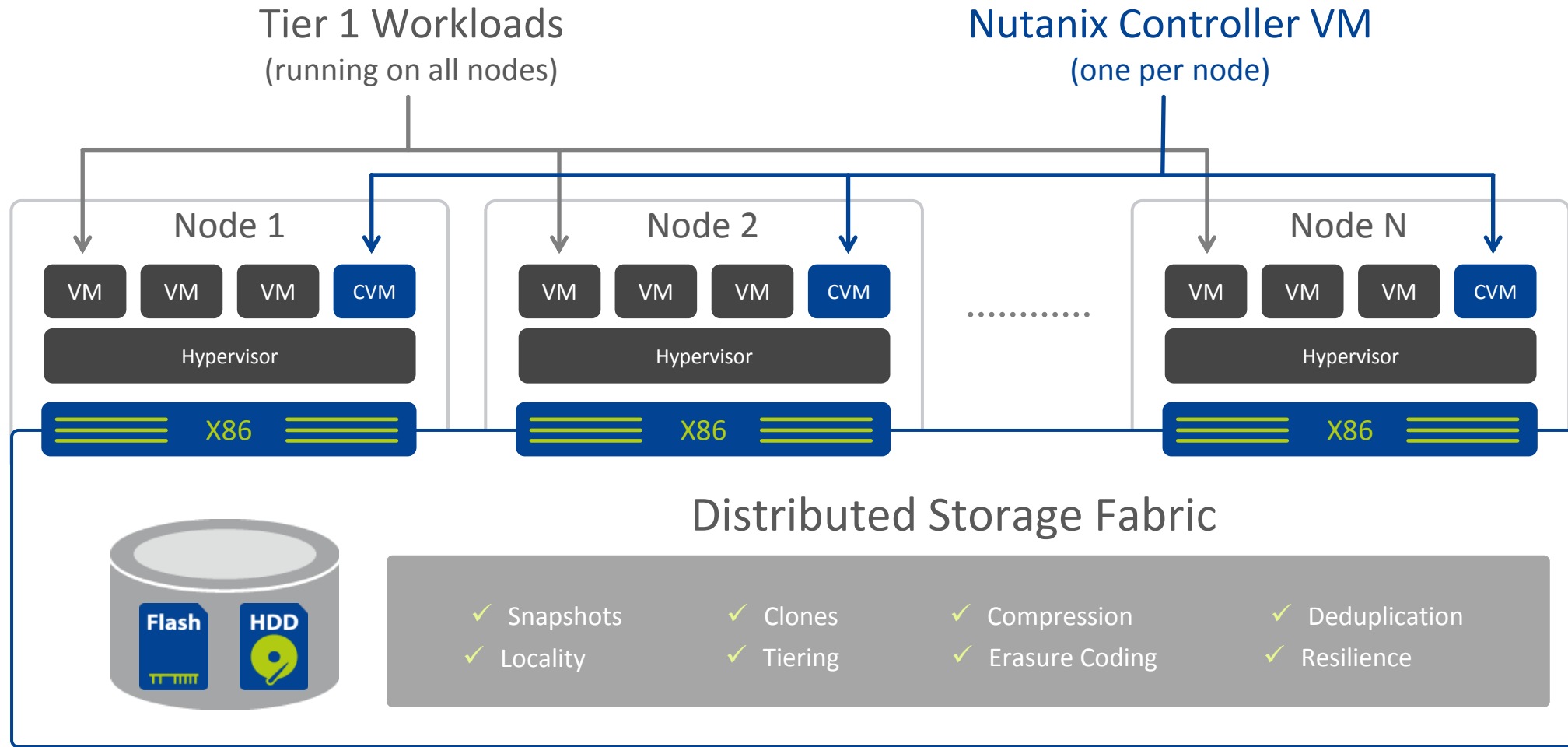
Scale-



## True Linear Scale-out Performance



# > Scalable Distributed System Design

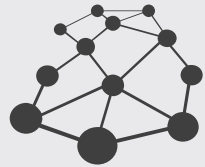


# > Infrastructure Lifecycle Benefits



BUY

Pay as You Grow - buy only what you need, and stop expensive overprovisioning



DEPLOY

Rapid Deployment – set up in minutes for fast time to value



MANAGE

Simplified Management - single pane of glass to manage all infrastructure



SCALE

Incremental Scalability - scale on demand in minutes, with zero downtime



SUPPORT

One-stop Support – expert support for complete infrastructure stack



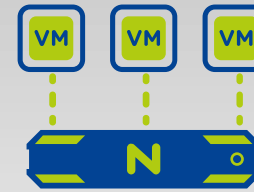
Enterprise  
Storage



Infrastructure  
Resilience



Data Protection



Virtualization



Security

Nutanix Acropolis

- ✓ Simple
- ✓ Scalable
- ✓ Secure

## Nutanix Prism

- ✓ Any Runtime
- ✓ No Forklift
- ✓ No Lock-In



One-Click Infrastructure  
Management

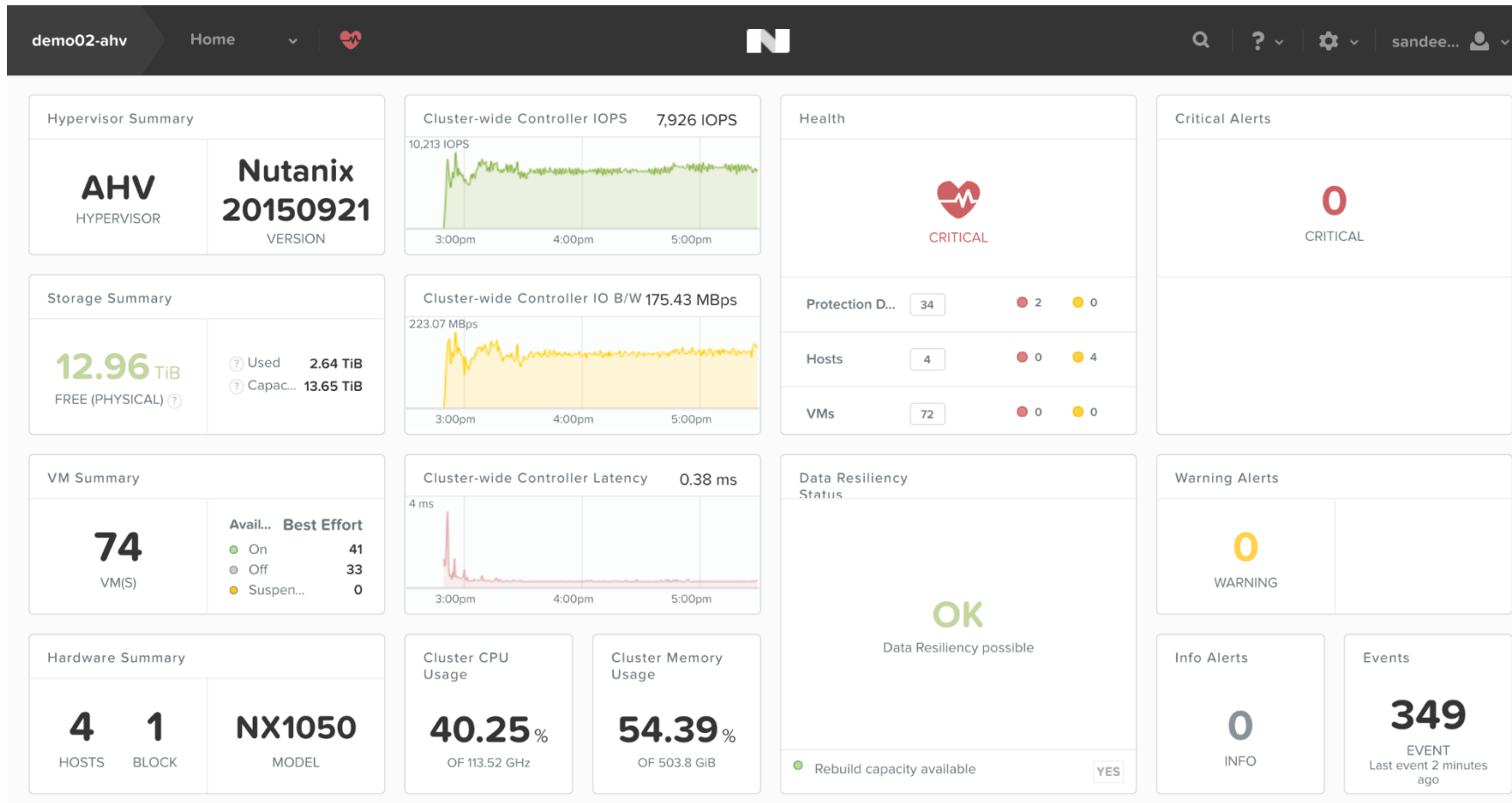


One-Click Operational  
Insights



One-Click Remediation

# > Consumer-Grade Design



Intuitive  
Beautiful  
Insightful





# Nutanix: The Enterprise Cloud Company

Make datacenter infrastructure invisible, elevating IT to focus on applications and services



Founded in 2009



2,350+ employees



**NUTANIX™**



Thank You